



2018+ JEEP JL/JT SMOKED REPLACEMENT LED FENDER LIGHT WITH DRL, SEQUENTIAL TURN SIGNALS AND SIDE MARKER LIGHTS

QTE1023



VER:20-1

INTRODUCTION:

Thank you for purchasing our Plug-in-Play Jeep JL/JT Smoked Replacement LED Fender Light with Sequential Turn Signals. Carefully remove all the components and examine for any missing parts or visible damage caused by shipping and report any damage to the carrier and keep the shipping package. Take a good look at all the components so you are familiar with them before digging into this.

REQUIRED TOOLS :

- T30 TORX DRIVER
- 10MM DRIVER AND SOCKET
- DOOR TRIM REMOVAL TOOL (OR FLAT HEAD SCREWDRIVER)
- NEEDLE NOSE PLIERS

PARTS LIST:

- 1. DRIVERS SIDE DRL LIGHT
- 2. PASSENGER SIDE DRL LIGHT



Record any serial no. here _____

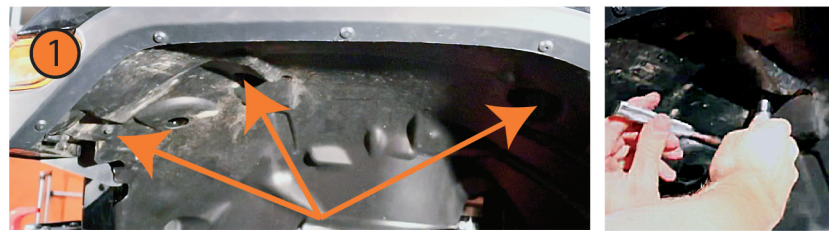
WARNING:

Read all instructions and warnings before installing and using. **INSTALLER:** This manual must be delivered to the end user of this equipment.

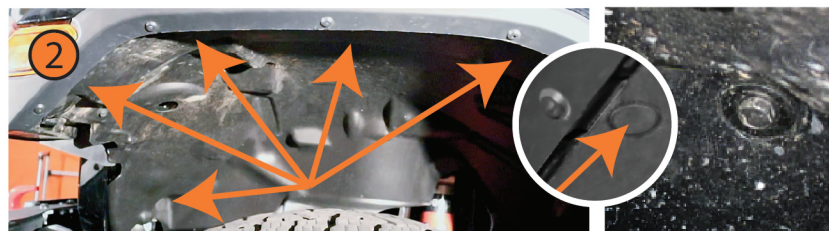


INSTALLATION

1. Park the vehicle on level ground and apply the parking brake. From the wheel well of the front drivers side fender. Use your 10mm socket and remove three 10mm bolts that are in the fender well.



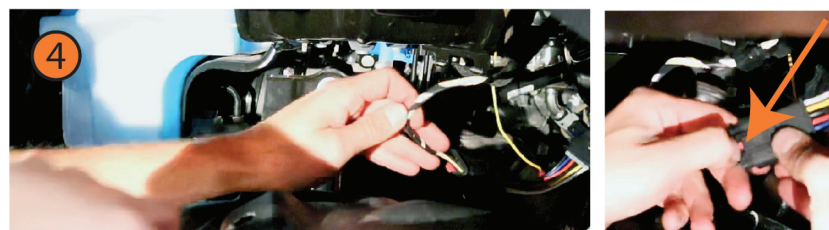
2. Remove five plastic clips that are holding on the fender inner liner. Use a door trim removal tool to get under the plastic clip head and pry. Then use needle nose pliers and remove the pin completely. Do not lose.



3. Starting from the front. Pull out the fender inner liner and work your way towards the back. Separate the liner so you can access the Fender Light wire connector.



4. Disconnect the Fender Light connector that is located on exterior wall of the engine compartment. It is towards the firewall end of the wheel well. Be sure to press the mini red lock tab so the Fender Light connector will release and pull the two apart.

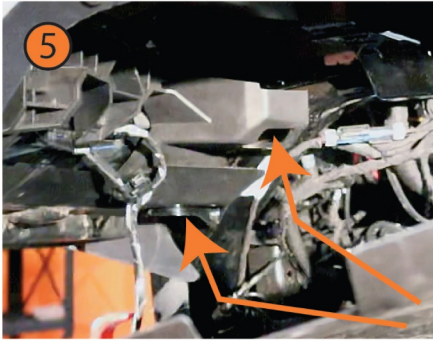


— LIGHT UP THE DARKNESS —



5. Remove two 10mm bolts in order to loosen up the factory fender supports. One bolt is hidden in a rectangular U cutout.

6. Now you can release the lower shield which will expose three fender light mounting bolts. Hold the lower part of the fender near the body with your left hand and use your right hand to pull down on the shield.



7. Now we need to remove three T30 screws that fasten the fender light to the support brace and to the fender itself.

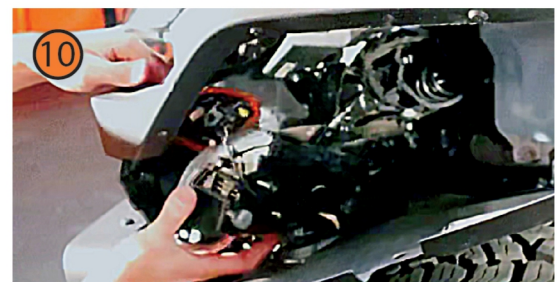
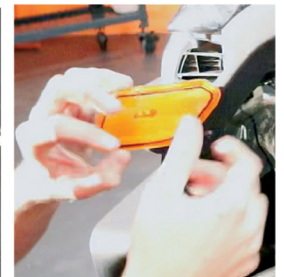
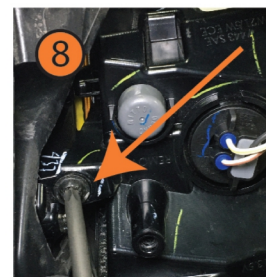
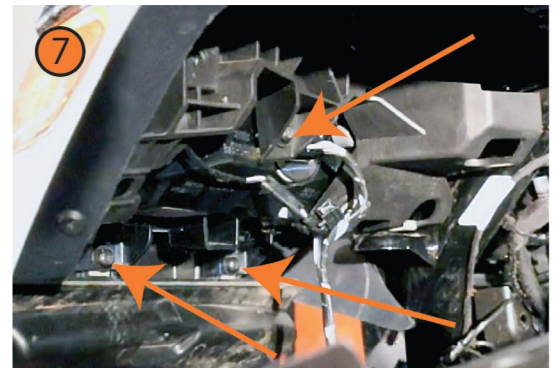
8. Everything will now be fairly loose and ready for removal. The amber side marker should be able to slide forward and pop out to free up more space. If the side marker will not disengage. Look in between the support brace and the fender flare near the side marker for a bolt holding the side marker to the fender light. Some models have this bolt while others dont.

9. There are five "Fir Tree Cable Ties" that attach the wire to the fender. You will need to locate those on the wire and use a flat head screw driver to gently pull the fir tree cable ties out of the retaining holes.

10. Now it is time to remove the stock fender light back into the wheel well. The clear lens has a strong 3M adhesive strip bonding this to the fender. Gently push the light from the front while pulling from the rear at the same time and the light will come loose. Rotate downward and remove the light from the fender.

11. Reverse all steps to install your new Quake LED Smoked Replacement LED Fender Light. Then start the same procedure on the passenger side.

12. Make sure to remove the 3M film backing before installing the new light so the lens will stick to the fender



Although we have made these instructions to cover all the differences between domestic/export as well as halogen vs stock LED fender lights. It is possible that there are some slight differences between hardware used.

