



2018+ JEEP JL FENDER CHOP DRL KIT WITH SWITCHBACK TURN SIGNALS AND SIDE MARKER LIGHTS

QTE991



VER: 19-1

INTRODUCTION:

Thank you for purchasing our Plug-in-Play Jeep JL Fender Chop Kit with Switchback DRL Lights. Carefully remove all the components and examine for any missing parts or visible damage caused by shipping and report any damage to the carrier and keep the shipping package. Take a good look at all the components so you are familiar with them before digging into this.



REQUIRED TOOLS :

T25 & T30 Torx	8mm & 10mm Socket
Door Trim Removal Tool	Needle Nose Pliers
Wire Cutters (Dikes)	Philips Screwdriver
Power Drill	1/4" & 1/8" Drill Bit

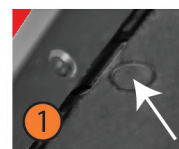
QTE991 PARTS LIST:

1. DRIVERS SIDE CHOP DRL LIGHT
2. PASSENGER SIDE CHOP DRL LIGHT
3. JL FENDER CONNECTOR
4. TWO M6 LOCK NUT
5. TWO M6 SPLIT LOCK WASHER
6. TWO M6 FLAT WASHER
7. TWO M6X16MM BOLT

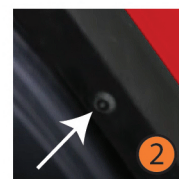
NOTE: THIS KIT INVOLVES VEHICLE MODIFICATION AND MECHANICAL SKILLS. IF YOU ARE NOT CONFIDENT IN YOUR SKILLS, CONTACT A PROFESSIONAL INSTALLER.

INSTALLATION

1. Park the vehicle on level ground and apply the parking brake. From the underside of the fender. Use a door trim puller and remove the 7 round plastic push in clips that are connecting the inner fender liner to the fender flare. They are located on the inner fender liner, next to the outer edge of the fender.



2. Drill out the center of the 8 plastic rivets that are located on the outside most edge of the fender. You can now remove the inner fender from the fender assembly to gain access to the rest of the fender.



3. Disconnect the Fender Light connector that is located on exterior wall of the engine compartment. Be sure to press the mini red tab so the connector will release.

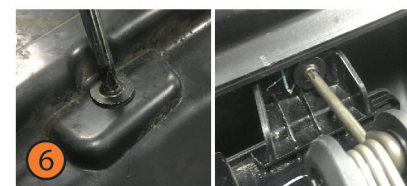
4. Next we need to remove the 10mm bolts in order to remove the fender. It is located right behind the factory fender light and close to the body. The 2nd bolt is located about 6 inches behind that bolt and hidden beneath plastic covers. Look for the access hole and use a socket extension to remove.



5. In order to remove the actual fender from the JL. You will need to pinch and pre-release the 10 white push pins that are rectangular in shape. You can release the locking part of the pin by using needle nose pliers and pressing the lock tabs together. These clips can be reused later to reattach the fender. Now the entire fender can be removed.



6. Now we need to remove the factory fender light housing. Remove the bottom shield by removing the center Philips bolt. This will allow you to flip up the plastic shield to view two T25 screws holding the fender light to the plastic shield.



-Wire Diagram is for Illustration Only.
-Actual wire harness lengths and wire gauge are not to scale.
-Actual wire harness components and lights are not to scale.



— LIGHT UP THE DARKNESS —



2018+ JEEP JL FENDER CHOP DRL KIT WITH SWITCHBACK TURN SIGNALS AND SIDE MARKER LIGHTS

QTE991



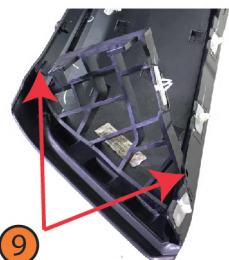
VER: 19-1

QUAKE LED™



7. Remove those two T25 screws and also remove the two T25 bolts retaining the top side of the light housing.

8. Next remove the three T30 torx bolts retaining the brace behind the light. You can now access the light housing, unplug and remove wiring from the flare. Pull the wire to release the fir tree zip ties. The clear lens on the fender light has adhesive on the front so gently pull and remove it from the fender.



9. Remove the triangular fender flare support pieces located on the rear of the fender. Using a pair of diagonal wire cutter frequently called dikes. Cut the rivets and clip holding these brackets in, it can now be removed.

10. Cut off the plastic clip in the front of the flare. It is located close to the fender light port hole.



11. Next is to remove the inner fender section to the upper fender flare. The outer most edge is held in by locking tabs connecting the upper and inner together. These will pry out fairly easy. The center fender flare section is plastic welded in 39 spots. Carefully pull and separate it from the fender flare. Be careful not to twist as this could wrinkle painted fenders. Remove the inner part of the fender flare.



12. Before reinstalling the fender onto the jeep, trim off those locking tabs that once held the upper and lower fender together. Using the clips, we removed in step 5, re-install the flare. Also trim off the tab on the front of the fender flare that is closest to the body of the jeep.



13. Some version chop brackets have a mounting tab to further secure the top fender flare to the chop bracket. It is located right above the side marker light. Loosely install the fender chop bracket into position and reinstall the two 10mm bolts that we removed in Step 4. Mark the location where to drill this 1/4" hole to secure the top fender flare to the chop bracket. Remove the bracket and drill a small pilot hole from the inside of the fender flare. Now using a 1/4" bit drill from the outside of the flare using the pilot as reference. Re-install the chop bracket and tighten down the M6 hardware.



14. Finish by connecting the lights to the stock JL Fender Light wiring harness. Use zip ties to secure the wiring. Perform all the above steps to the passenger side of the vehicle as well to complete the install. ENJOY!!!



Quake LED is not responsible or liable for improper installation of this kit. Use common sense when installing.

NOTE: THIS KIT INVOLVES VEHICLE MODIFICATION AND MECHANICAL SKILLS. IF YOU ARE NOT CONFIDENT IN YOUR SKILLS, CONTACT A PROFESSIONAL INSTALLER.



— LIGHT UP THE DARKNESS —