



# 2018+ JEEP JL/JT FENDER CHOP DRL KIT WITH SEQUENTIAL TURN SIGNALS AND SIDE MARKER LIGHTS

QTE993



VER: 20-2

## INTRODUCTION:

Thank you for purchasing our Plug-in-Play Jeep JL/JT Fender Chop Kit with Sequential DRL Lights. Carefully remove all the components and examine for any missing parts or visible damage caused by shipping and report any damage to the carrier and keep the shipping package. Take a good look at all the components so you are familiar with them before digging into this.

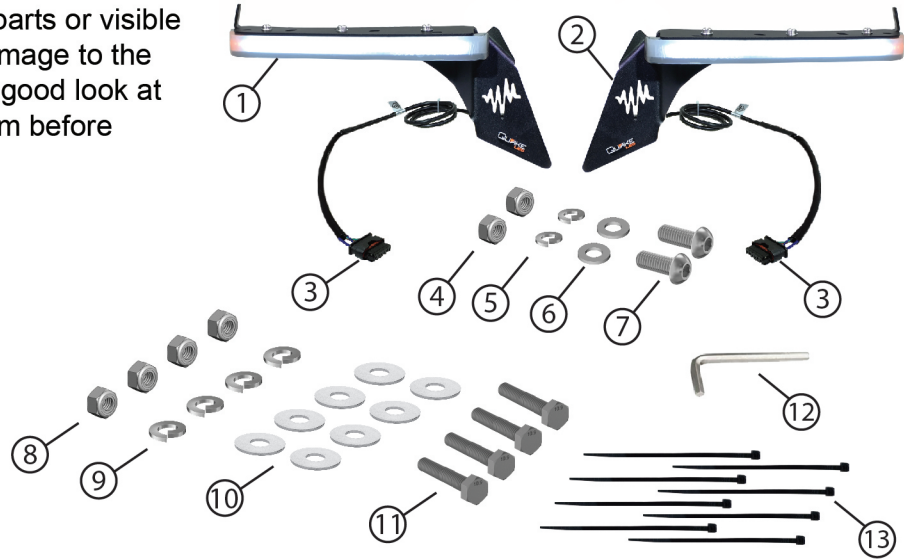


### REQUIRED TOOLS :

- T25 & T30 Torx
- 8mm & 10mm Socket
- Door Trim Removal Tool
- Needle Nose Pliers
- Wire Cutters (Dikes)
- Phillips Screwdriver
- Power Drill
- 1/4" & 1/8" Drill Bit

### PARTS LIST:

1. PASSENGER SIDE CHOP DRL LIGHT
2. DRIVERS SIDE CHOP DRL LIGHT
3. JL FENDER CONNECTOR
4. TWO M6 LOCK NUT
5. TWO M6 SPLIT LOCK WASHER
6. TWO M6 FLAT WASHER
7. TWO M6\*16MM BOLT
8. EIGHT M8 FLAT FENDER WASHER
9. FOUR M8\*25MM BOLT
10. FOUR M8 SPLIT WASHERS
11. FOUR M8 LOCK NUTS
12. ONE ALLEN WRENCH
13. EIGHT CABLE ZIP TIES



Record any serial no. here \_\_\_\_\_

### WARNING:

Read all instructions and warnings before installing and using.

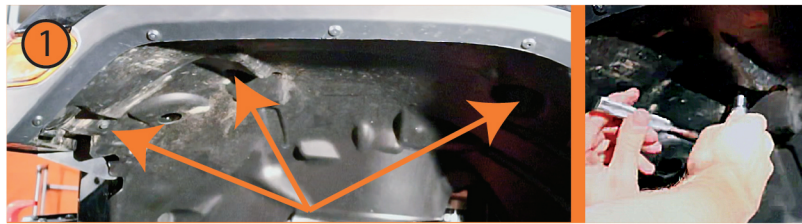
**INSTALLER:** This manual must be delivered to the end user of this equipment.



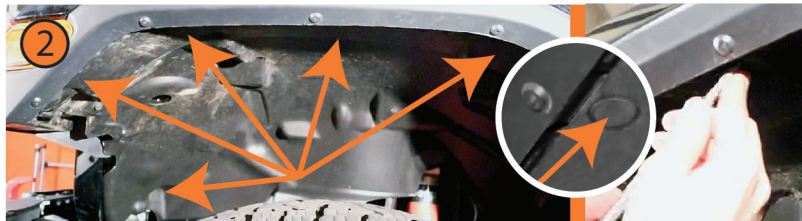
NOTE: THIS KIT INVOLVES **MAJOR VEHICLE MODIFICATION** AND MECHANICAL SKILLS. IF YOU ARE NOT CONFIDENT IN YOUR SKILLS, CONTACT A PROFESSIONAL INSTALLER.

### INSTALLATION

Step 1. Park the vehicle on level ground and apply the parking brake. From the wheel well of the front drivers side fender. Use your 10mm socket and remove three 10mm bolts that are in the fender well.



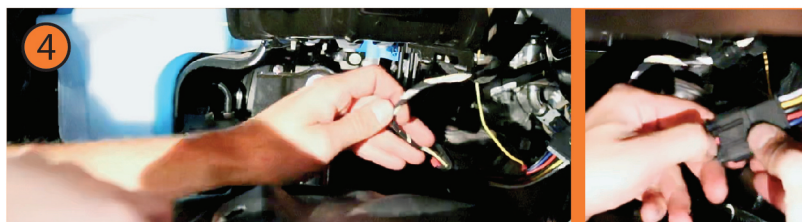
Step 2. Remove five plastic clips that are holding on the fender inner liner. Use a door trim removal tool to get under the plastic clip head and pry. Then use needle nose pliers and remove the pin completely. Do not lose.



Step 3. Starting from the front. Pull out the fender inner liner and work your way towards the back. Separate the liner so you can access the Fender Light wire connector.



Step 4. Disconnect the Fender Light connector that is located on exterior wall of the engine compartment. It is towards the firewall end of the wheel well. Be sure to press the mini red lock tab so the Fender Light connector will release and pull the two apart.



Parts Diagram is for Illustration Only and NOT to SCALE

— LIGHT UP THE DARKNESS —



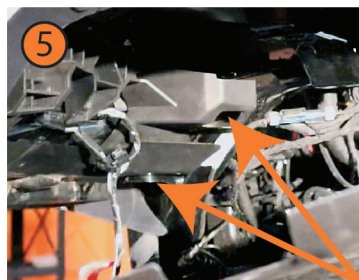
# 2018+ JEEP JL/JT FENDER CHOP DRL KIT WITH SEQUENTIAL TURN SIGNALS AND SIDE MARKER LIGHTS

QTE993



VER: 20-2

## QUAKE™ LED



Step 5. Remove two 10mm bolts in order to loosen up the factory fender supports. One bolt is hidden in a rectangular U cutout.

Step 6. Now you can release the lower shield which will expose three fender light mounting bolts. Hold the lower part of the fender near the body with your left hand and use your right hand to pull down on the shield.

Step 7. Now we need to remove three T30 screws that fasten the fender light to the support brace and to the fender itself.

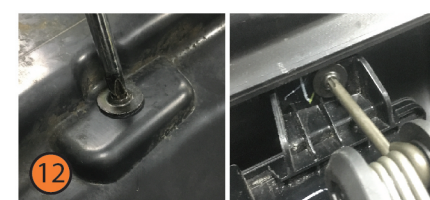
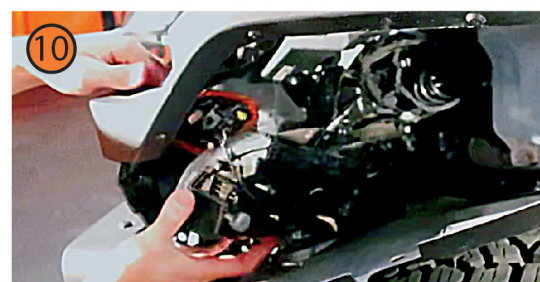
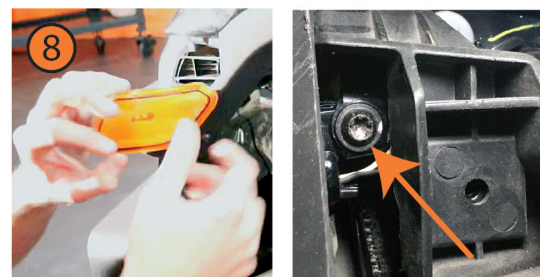
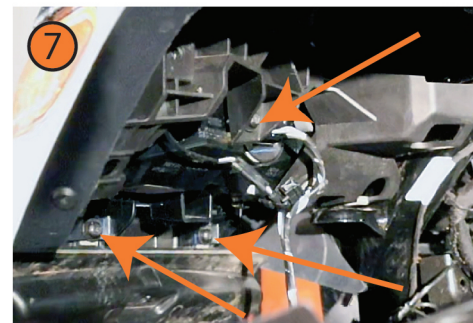
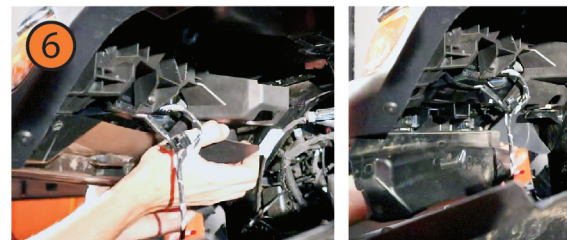
Step 8. Everything will now be fairly loose and ready for removal. The amber side marker should be able to slide forward and pop out to free up more space. If the side marker will not disengage. Look in between the support brace and the fender flare near the side marker for a bolt holding the side marker to the fender light. Some models have this bolt while others don't.

Step 9. There are five "Fir Tree Cable Ties" that attach the wire to the fender. You will need to locate those on the wire and use a flat head screw driver to gently pull the fir tree cable ties out of the retaining holes.

Step 10. Now it is time to remove the stock fender light back into the wheel well. The clear lens has a strong 3M adhesive strip bonding this to the fender. Gently push the light from the front while pulling from the rear at the same time and the light will come loose. Remove the light from the fender.

Step 11. In order to remove the actual fender from the JL. You will need to pinch and pre-release the 10 white push pins that are rectangular in shape. You can release the locking part of the pin by using needle nose pliers and pressing the lock tabs together. These clips can be reused later to reattach the fender. Now the entire fender can be removed.

Step 12. Now we need to remove the factory fender light housing. Remove the bottom shield by removing the center Phillips bolt. This will allow you to flip up the plastic shield to view two T25 screws holding the fender light to the plastic shield.



— LIGHT UP THE DARKNESS —

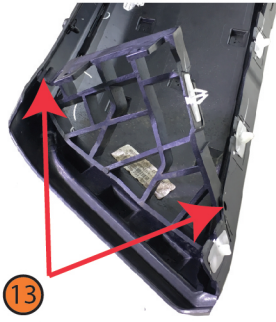


# 2018+ JEEP JL/JT FENDER CHOP DRL KIT WITH SEQUENTIAL TURN SIGNALS AND SIDE MARKER LIGHTS

QTE993

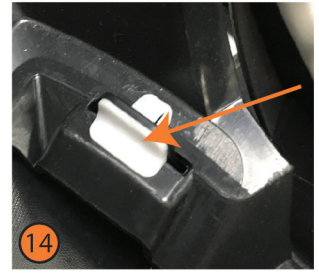


VER: 20-2

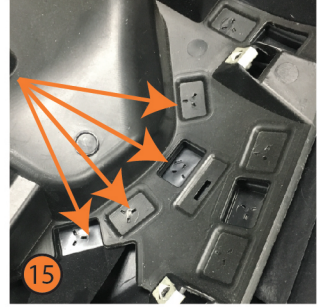


Step 13. Remove the triangular fender flare support pieces located on the rear of the fender. Using a pair of wire cutters and cut the rivets and clip holding these brackets in, it can now be removed.

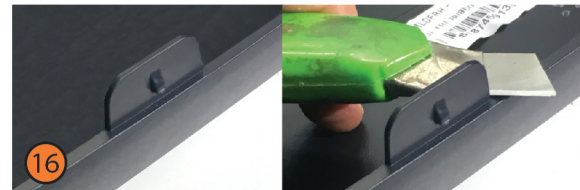
Step 14. Cut off ONE plastic clip in the front of the flare. It is located close to the fender light port hole. DO NOT CUT the 10 white push pins that run along the edge (step 11) as you will need those to reassemble the top fender flare to the body.



Step 15. Next is to remove the inner fender section that is attached to the upper fender flare. The outer most edge is held in by locking tabs connecting the upper and inner together. These will pry out fairly easy. The center fender flare section is plastic welded in 39 spots. Carefully pull and separate it from the fender flare. Be careful not to twist as this could wrinkle painted fenders. Remove the inner part of the fender flare.



Step 16. Trim off those locking tabs that once held the upper and lower fender flare together. Also trim off the tab on the front of the fender flare that is closest to the body of the jeep.

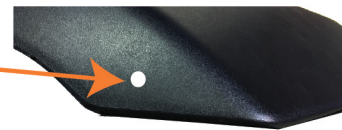


Step 17. Now it's time to install the Chop brackets/DRL lights. Re-install the upper flare to the body and insert those 10 white push pins back into place. The upper fender flare will now be loosely assembled to the body.



Step 18. Loosely position and install the fender chop bracket into position and above the two body supports. Run the wire back towards the factory fender light connector that we disconnected in step 4 and connect. At this point you can check that the light functions properly.

Step 19. Position the bracket and DRL upper edge so it lines up perfect with the fender flare contour. Use hardware #4, 5, 8 and 9 to secure the chop bracket to the vehicle.



Step 20. Chop brackets have a mounting tab to further secure the top fender flare to the chop bracket. Mark the location where to drill this 1/4" hole to secure the top fender flare to the chop bracket. Drill a small pilot hole from the inside of the fender flare. Now using a 1/4" bit CAREFULLY drill from the outside of the flare using the pilot as reference. Use hardware #4, 5, 6, 7 and tighten down the hardware.



ALTERNATE: Some customers have had great results using a strong double sided adhesion EVA strip rather than drilling a hole and using hardware. Try that 1st!

Special thanks to @jl\_hunter and ashleyramos\_1 for installation feedback and product improvement!



Quake LED is not responsible or liable for improper installation of this kit. Use common sense when installing.

NOTE: THIS KIT INVOLVES VEHICLE MODIFICATION AND MECHANICAL SKILLS. IF YOU ARE NOT CONFIDENT IN YOUR SKILLS, CONTACT A PROFESSIONAL INSTALLER.



— LIGHT UP THE DARKNESS —